



Strategic Regional Policy Plan

**Public
Outreach
Campaign**
February-March



STRATEGIC REGIONAL POLICY PLAN: *2023 REVISIT*



Transportation



Public
Facilities



Natural Systems



Economic
Development

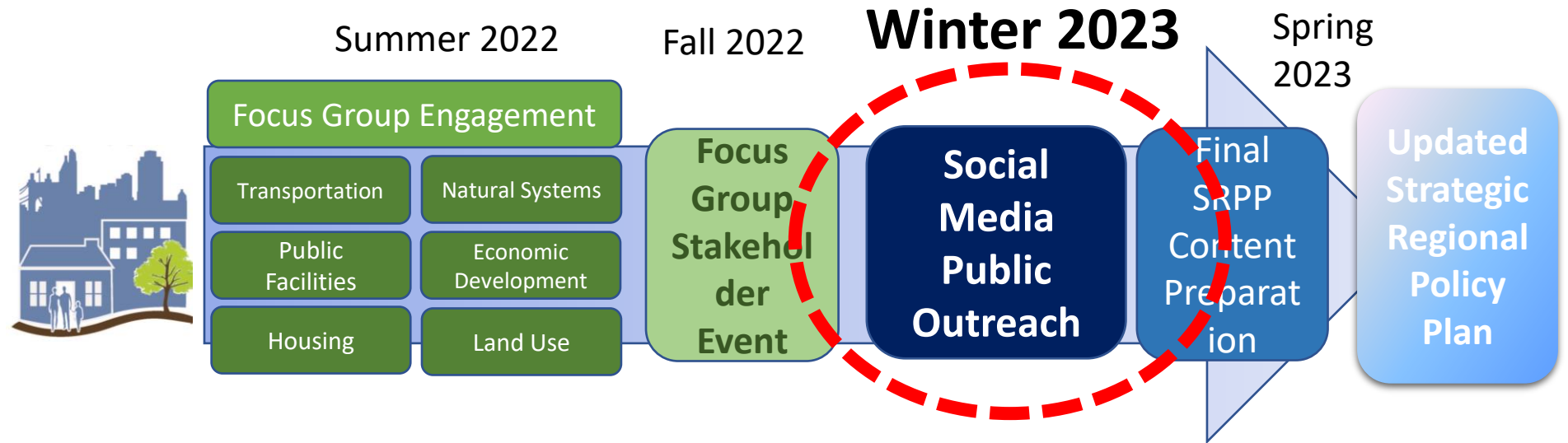


Housing



Land Use

TIMELINE



OUTREACH METHODS



○ Online Public Survey

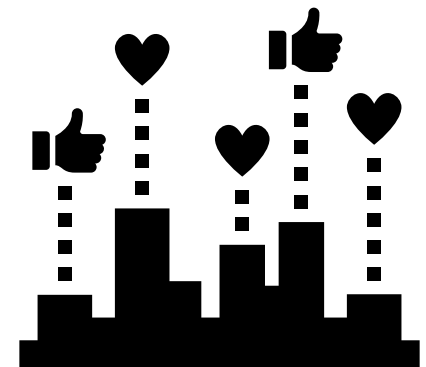
- ~10 minutes
- Informing priorities and areas of emphasis
- Zip Code required to monitor outreach

○ Social Media Polls



REQUESTING YOUR HELP

- Links on your websites
- Sharing on Facebook ,Twitter, LinkedIn
- Email blasts
- Newsletters and Local Press Coverage



REQUESTING YOUR HELP

- Campaign Period:

Through March 31st

Contacts:

Jenny Newcomb, Digital Media Specialist

jnewcomb@oki.org (513) 619-7692

Travis Miller tmiller@oki.org (513) 619-7681

Jake Hesseling jhesseling@oki.org (513) 619-7684