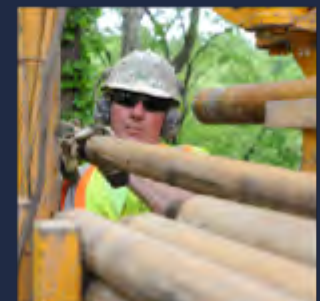
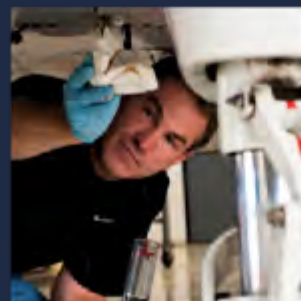


# ODOT'S LPA PROGRAM

OKI ICC MEETING, TUESDAY, NOVEMBER 12, 2019



# OVERVIEW

## LPA Project:

Any project sponsored by a Local Public Agency, awarded state or federal transportation funding (administered by ODOT)

*October 2019: OKI's Board approved \$62.8M for 23 transportation projects in their region.*

# LPA PROGRAM REQUIREMENTS

- Subject to ODOT's Project Development Process



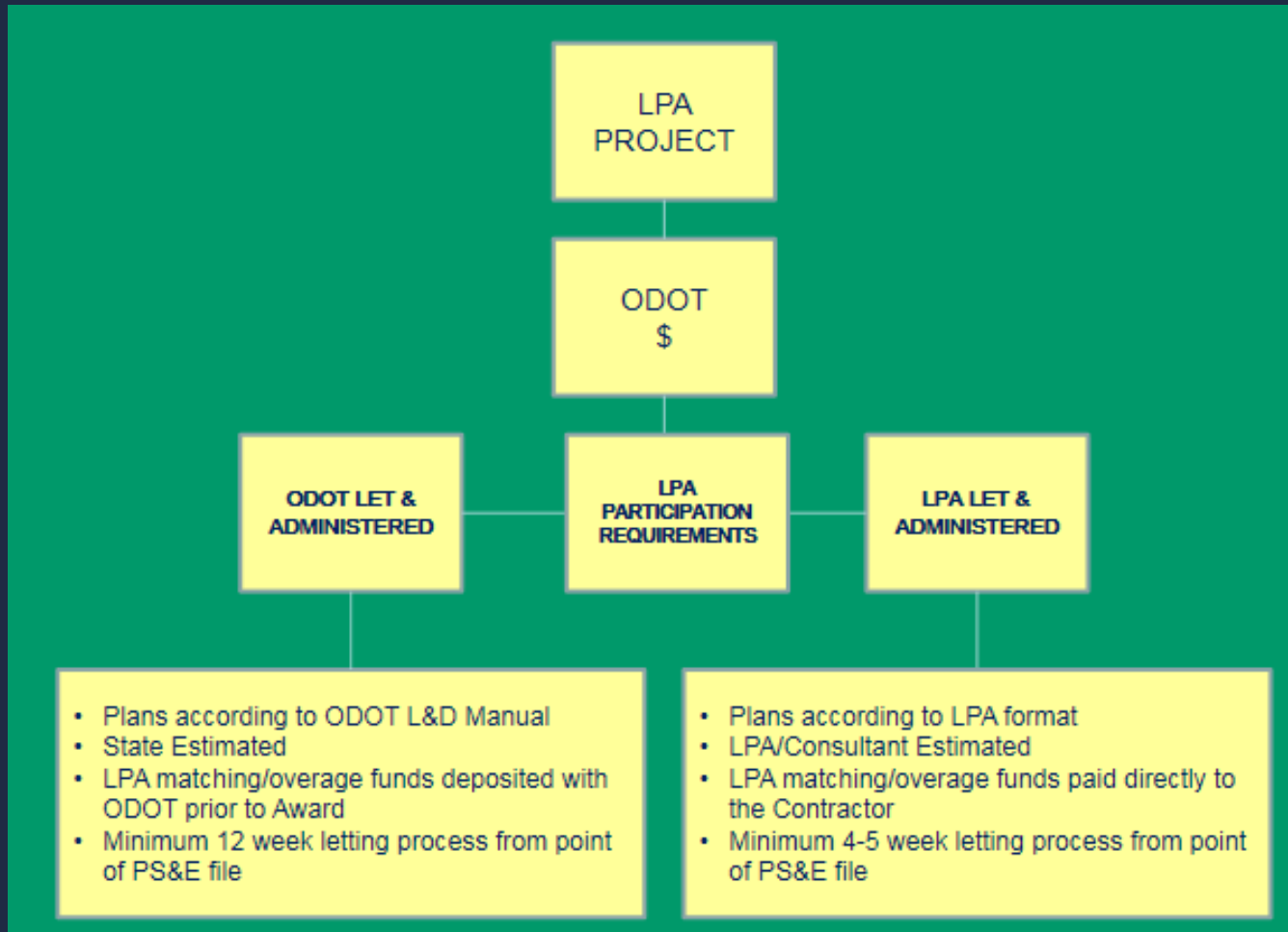
- Subject to state and federal transportation policy & law



# LPA PROJECT DELIVERY

- ODOT District, LPA, and OKI staff partner to scope new projects, define the state and federal requirements that apply, and set a project schedule
- LPAs “drive” the Planning, Preliminary Engineering, Environmental Engineering, Final Engineering, & Right of Way Acquisition Phases on all LPA projects
- ODOT provides oversight along the way including:
  - Responsibility to ensure NEPA & Uniform Act requirements are met;
  - Project design review (scope & applicable design criteria);
  - Adherence to project schedule (including “lock-down”)

# CONSTRUCTION CONTRACT DELIVERY



# LPA PROJECT DELIVERY

## Key Differences (ODOT-Let vs. Local-Let)

Plan Development Format

Project Agreements & Legislation

Project Schedule

Construction Administration & Inspection

Cash Flow

# LOCAL-LET PARTICIPATION REQUIREMENTS

## Two-step LPA Certification Process

1. Complete 12 Online e-Learning Modules (good for 5 years)

Introduction	Locally Administered Transportation Projects in Ohio	Project Development & Design	Right-of-Way
Environmental	Advertising, Sale and Award	Consultant Contract Administration	Construction Contract Administration
Railroad Coordination	Utility Coordination	Title VI for LPAs	Financial Responsibilities

2. Complete “LPA Participation Requirements Review Form” (must be updated every 4 years)

# LOCAL-LET PARTICIPATION REQUIREMENTS

## LPA is required to:

- Designate an “LPA Person in Responsible Charge”
- Identify who will serve as the “Construction Project Engineer”
- Provide examples of past transportation projects delivered
- Clarify processes and policies to ensure compliance for:

Consultant selection	Consultant management
Right of way acquisition	Environmental (NEPA)
Finance & Accounting	Recordkeeping
Advertising, sale, & award	Change Orders
Dispute resolution	Claims management
DBE requirements	Prevailing wages



# FINAL THOUGHTS

- Communication is a major key to success
  - Ask to be added to my LPA email list
- Timeliness is critical, now more than ever
- Consider using OKI & ODOT resources to help determine needs and solutions to your transportation problems
- Work with OKI and ODOT on how multiple sources of funding can be paired together to solve problems

# 2019 DISTRICT 8 LPA DAY

Monday, December 9, 2019

Countryside YMCA, 1699 Deerfield Rd, Lebanon, OH

8:30am - 1pm

Free to attend - LPAs, consultants all invited

Speakers include:

FHWA Ohio Division

ODOT Executive Leadership, Central Office, & District Staff

Ohio Attorney General's Office

Register at: <https://ltap.enrollware.com/enroll?id=3049044>

# DISTRICT 8 LPA CONTACTS

Scott Brown, P.E., District 8 LPA Coordinator

[Scott.Brown@dot.ohio.gov](mailto:Scott.Brown@dot.ohio.gov)

513-933-6706

Ben Miller, District 8 LPA Right of Way Coordinator

[Ben.Miller@dot.ohio.gov](mailto:Ben.Miller@dot.ohio.gov)

513-933-6655

Andrea Henderson, P.E., LPA Project Manager

[Andrea.Henderson@dot.ohio.gov](mailto:Andrea.Henderson@dot.ohio.gov)

513-933-6528

# QUESTIONS

